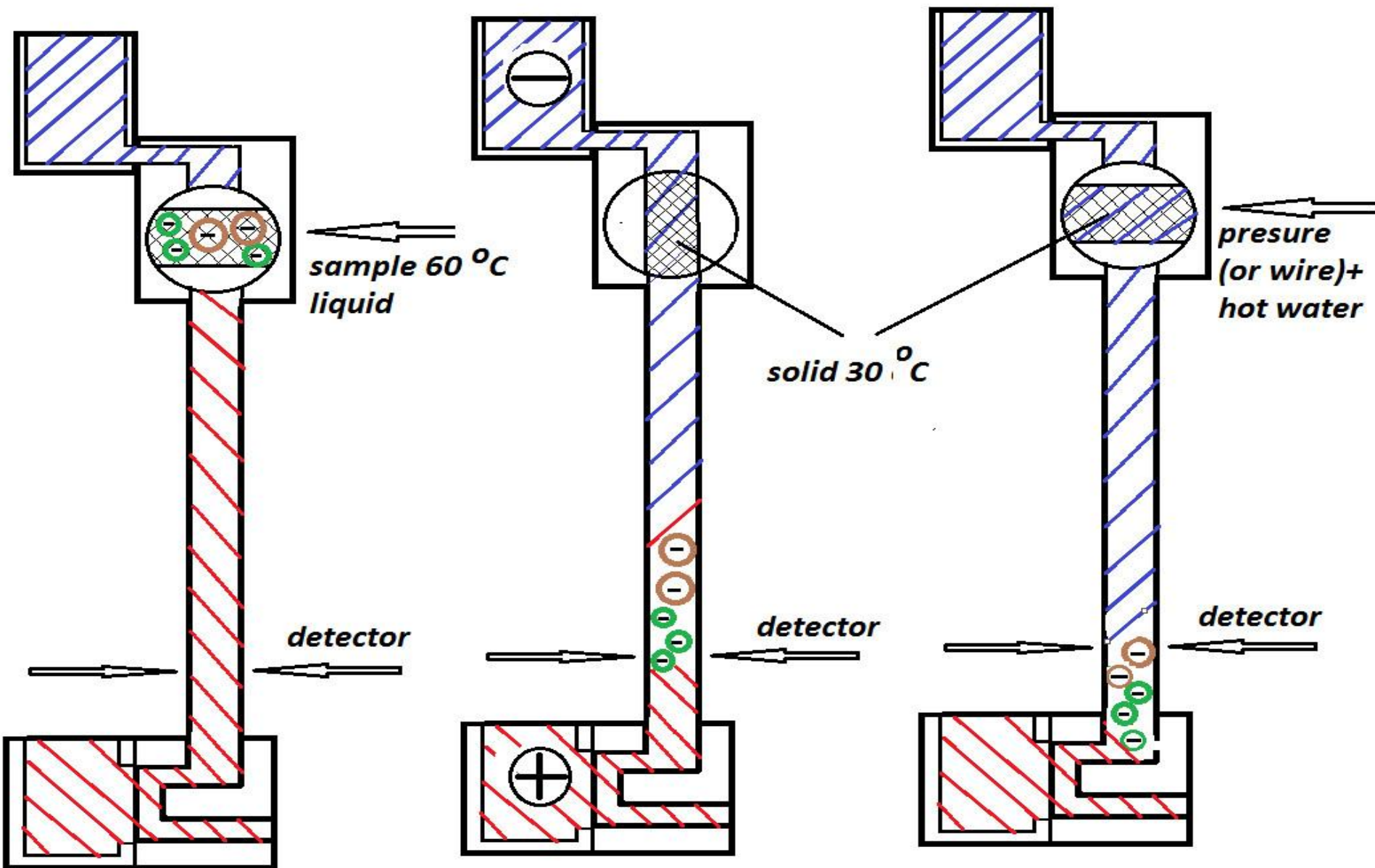


# Szibka a prosta analiza ionow w probkach želatinowych metodom izotachoforeza

Marian Koval, Villa Labeco, Spisska Nova  
Ves, Slovakia

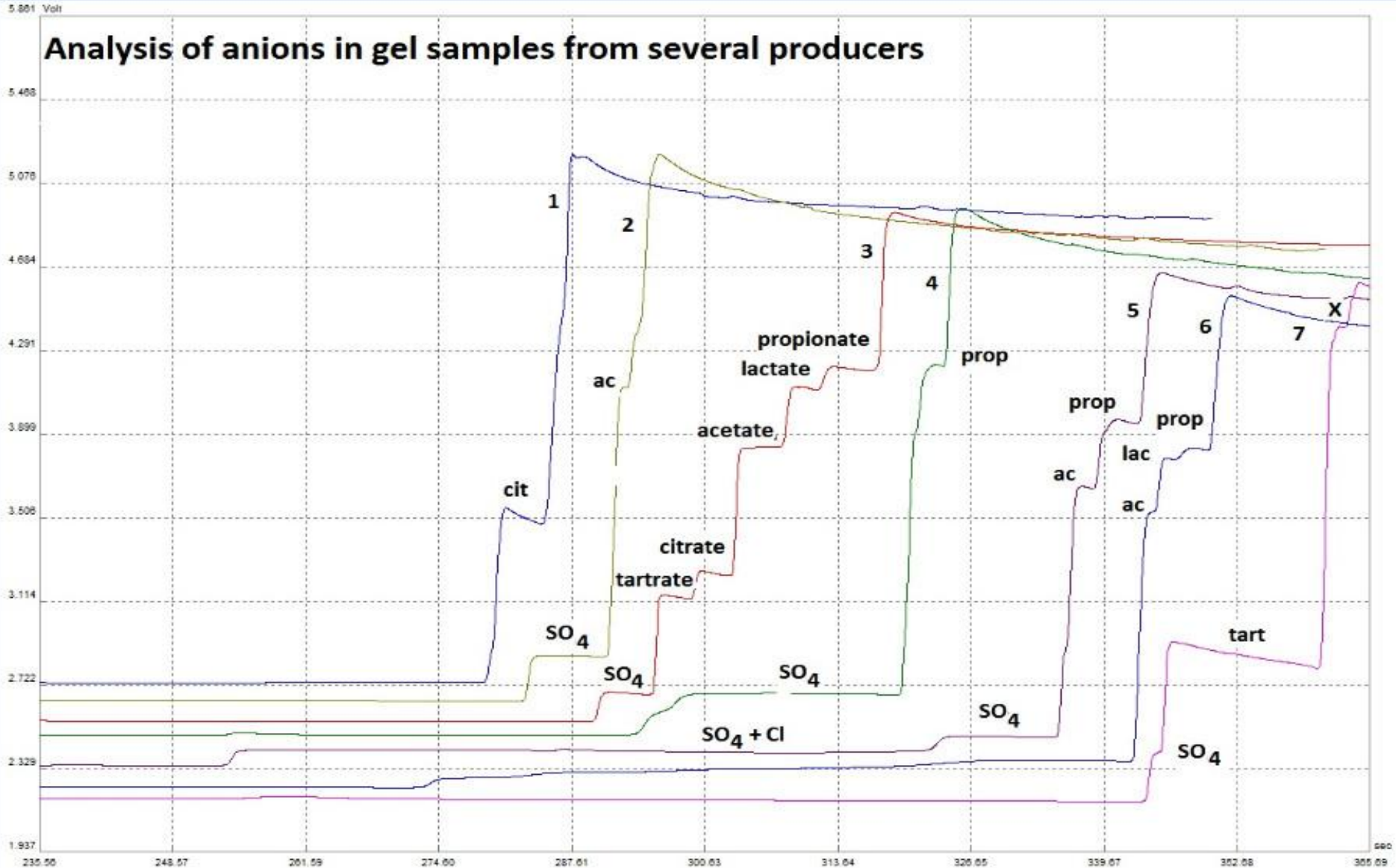
Jozef Marak, Comenius University, Faculty of  
Natural Science, Bratislava, Slovakia

# Principle of sample injection

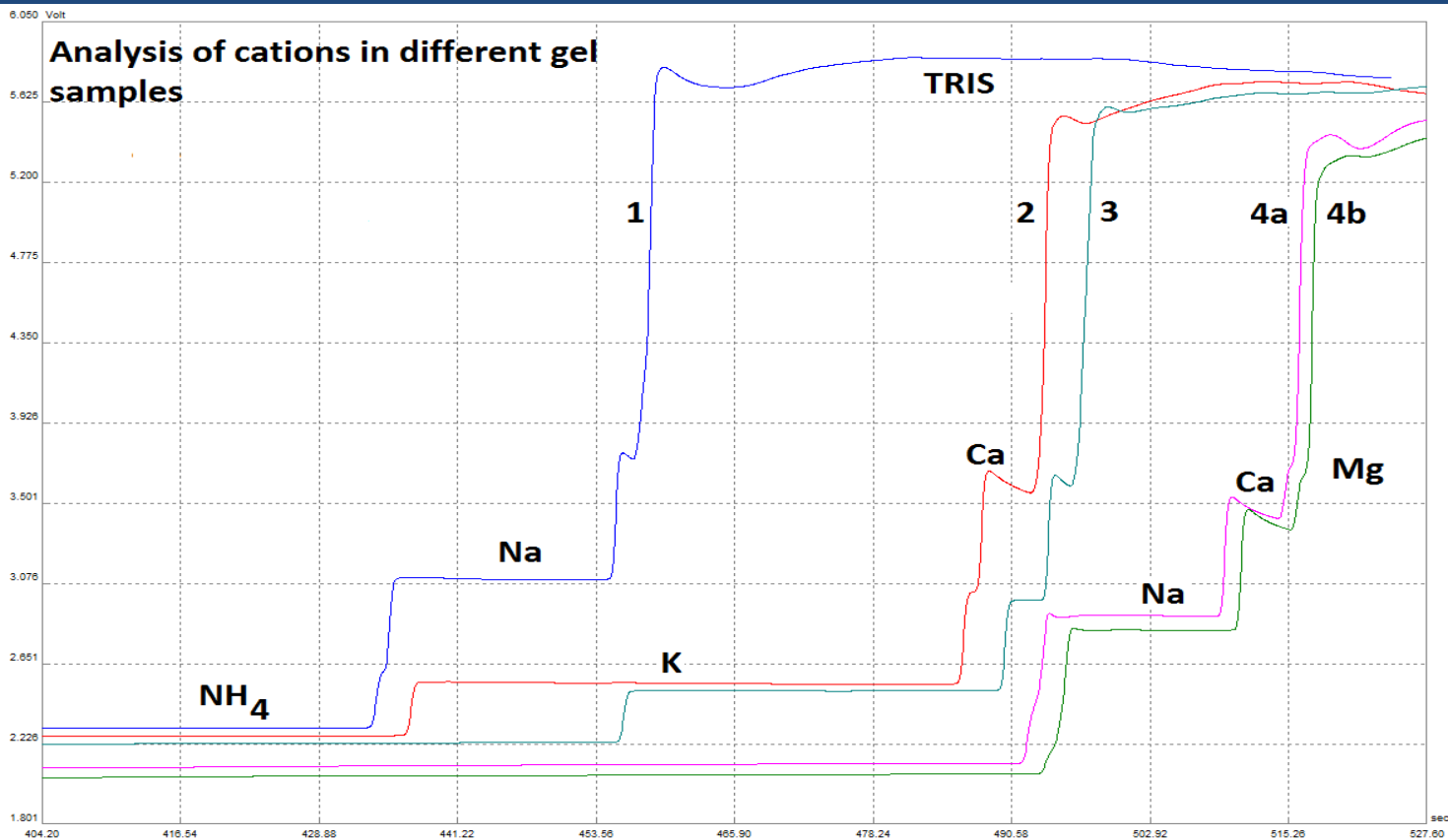


# Analiza anionow w probkach żelatiny

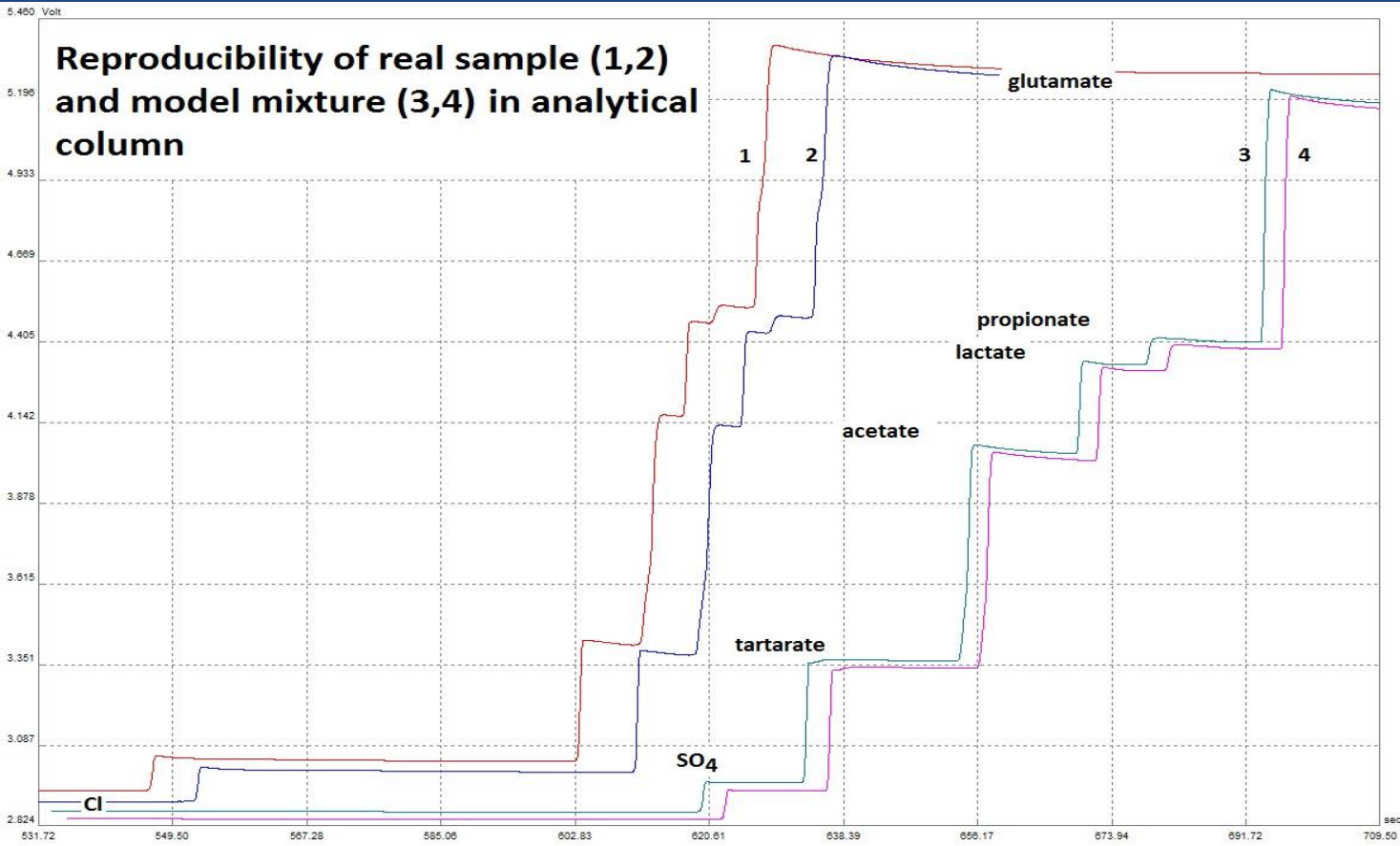
producers: Oetker, Tesco, Gelima, Labeta, 3 – model mixture



# Analysis of cations in samples from several producers

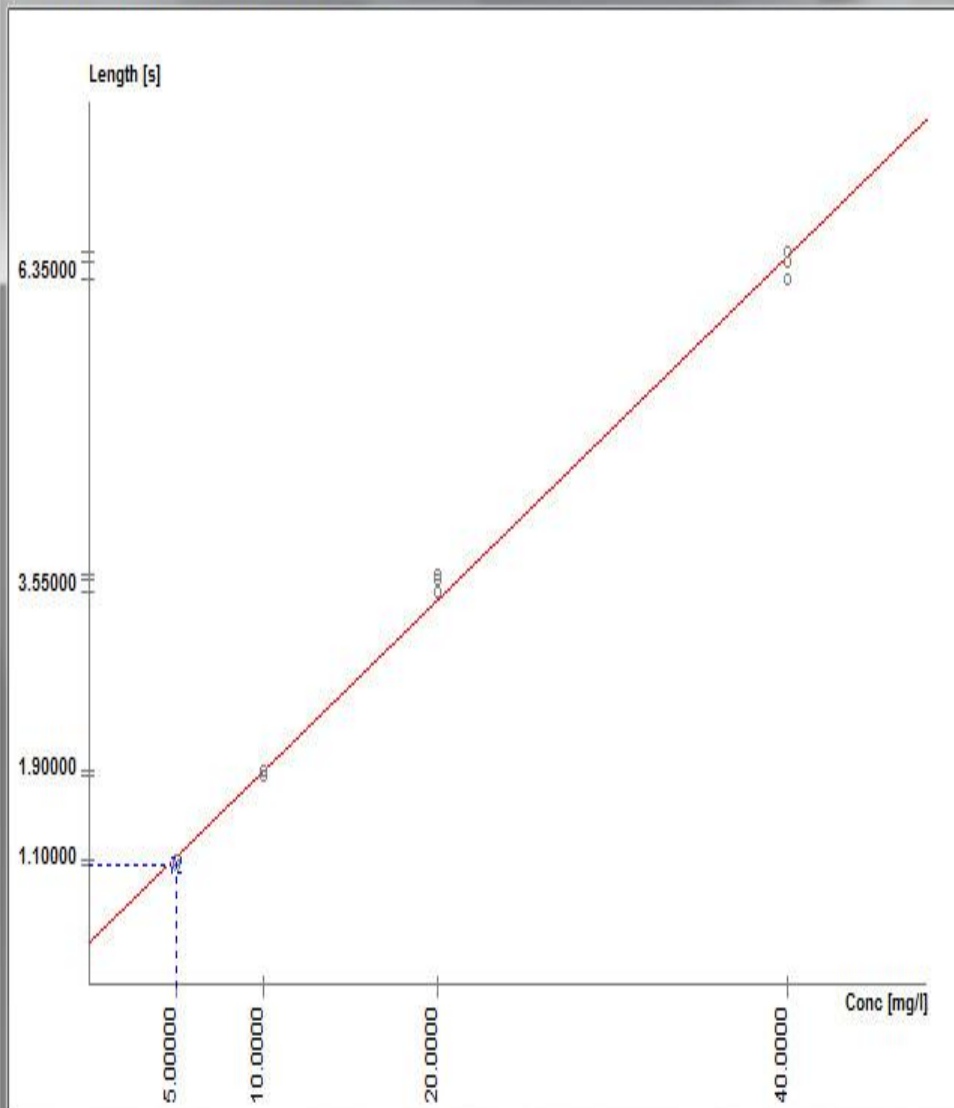


# Reproducibility of results



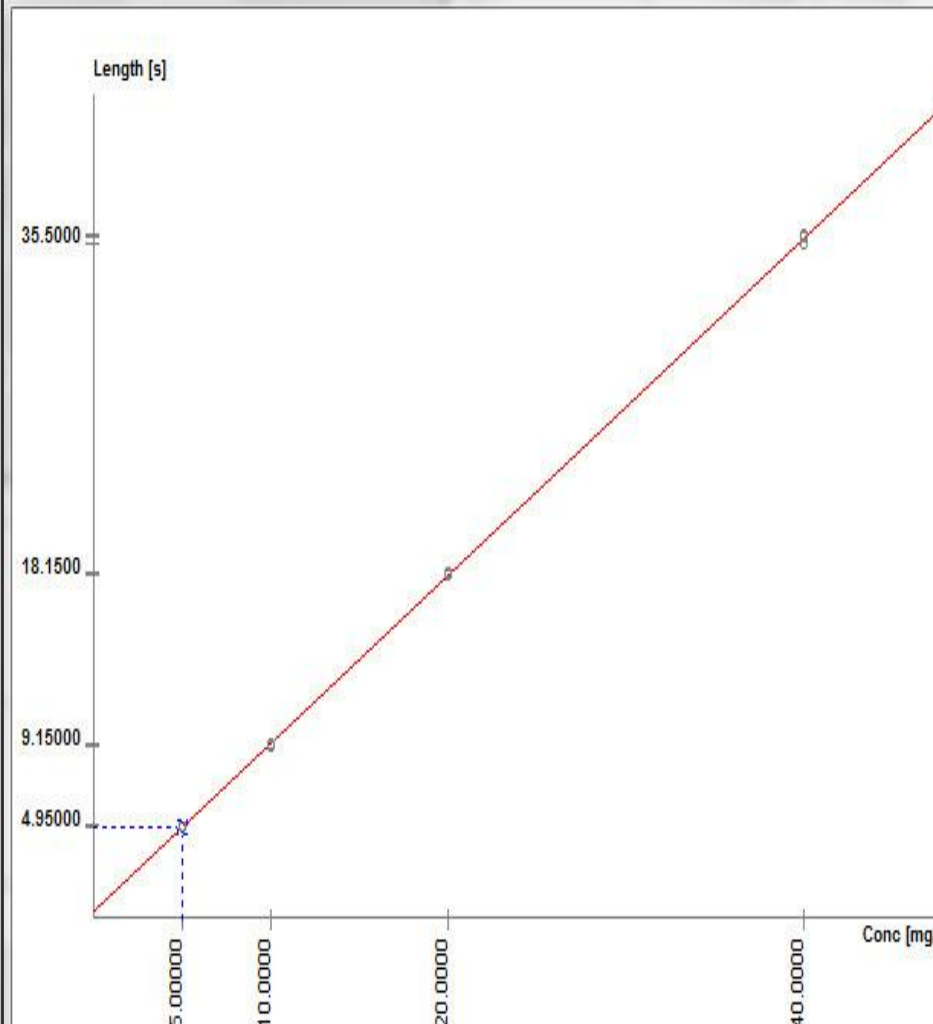
# Calibration curves for anions in preseparation column (left) and analytical column (right)

Calibration: želatiny PK, created on: 09. júla 2012



Conc = 1.13196629 \* Length [s] - 0.53869142  
cc = 0.9999208481 Average RSH: 0.618

Calibration: želatinyAK1, created on: 28. júna 2012



# Summary

- No sample pretreatment
- Time of analysis: 5 -15 min
- Detection limit: 0.5 mg/kg
- Analysis of anions or cations